



covisint[®]

a subsidiary of Compuware Corporation

Supplier Connection (PSA)

Start-up Manual_V3.5_EN



Welcome to the new world ...

covisint ... welcome to the world of business nowSM

Covisint enables companies of any size, location or technical sophistication to securely share vital business information, applications and processes across their trading partner network. As a leading provider of interoperability solutions and services, Covisint helps businesses speed decision-making, reduce cost and improve responsiveness in serving customers.

"A hosted, web-based tool that provides a low-cost alternative for a manufacturer to easily exchange information with suppliers."

Covisint



Customer:
Peugeot Citroen Automobiles S.A.

Product Overview:

- Supplier Connection provides suppliers with a low-cost alternative to traditional EDI; all you need is an Internet connection, a web browser and a laser printer (for bar code labels). Supplier Connection has been designed for smaller suppliers that have found traditional EDI to be complex and cost prohibitive. Its simple web-based access provides a cost-effective solution to engage smaller trading partners that would otherwise not participate. A consistent, multi-lingual user interface supported by customer-specific editing rules allows suppliers to readily understand and adapt to customer variations.

Features:

- Multi-lingual to conduct business globally
- Improve communications of schedule/requirements
- Improve accuracy of shipments
- Improve accuracy of invoices from suppliers



Start-up Manual

v3.5English

How to get started?

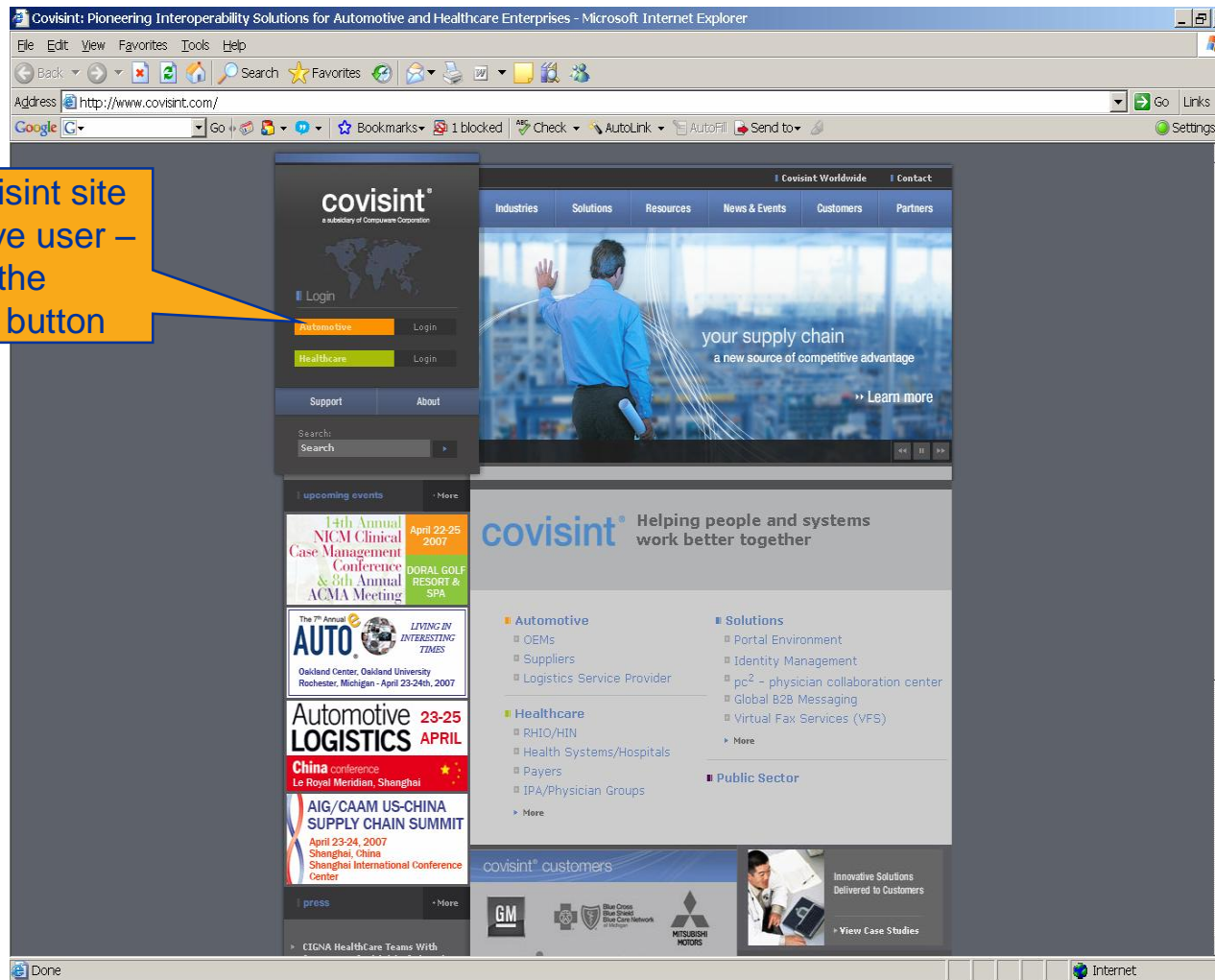
Step 1	Covisint Portal – Supplier Connection	7
Step 2	Online help and training material	12
Step 3	Set up user preferences	15
Step 4	Set up supplier company details	18
Step 5	Set up trading partner relationship	23
Step 6	Set up ship from location	30
Step 7	Technical requirements	39
	PSA Contact Information	41

Step 1 **Log into Covisint & go to Supplier Connection**

- To start your set-up in Supplier Connection please access:
www.covisint.com
- Enter your user ID and password in the fields provided. If you have not received an e-mail from Covisint with this information, please e-mail:
passwordreset@covisint.com
- Please see example in the next slide.



Enter the Covisint site
as a Automotive user –
Click on the
Automotive button





Covisint Automotive Login - Microsoft Internet Explorer

File Edit View Favorites Tools Help

Back Forward Stop Search Favorites

Address http://www.covisint.com/loginAuto.shtml

Google G- Go Bookmarks 1 blocked Check AutoLink AutoFill Send to Settings

covisint
a subsidiary of Compuware Corporation

Login
Automotive
Healthcare

Support About

Search:
Search

upcoming events
14th Annual NCM Clinical Case Management Conference & 3rd Annual NCM Meeting April 22-25, 2007
DORAL GOLF RESORT & SPA
The 7th Annual LIVING BY THE AUTO OAKLAND CENTER, OAKLAND UNIVERSITY Rochester, Michigan - April 23-24th, 2007
Automotive LOGISTICS 23-25 APRIL
China conference Le Royal Meridien, Shanghai
AIG/CAAM US-CHINA SUPPLY CHAIN SUMMIT April 23-24, 2007 Shanghai, China Shanghai International Conference Center
press
CIGNA HealthCare Teams With Compuware Covisint to Automate and Standardize Provider Utilization Review Practices
Community federations are moving beyond the automotive industry
Compuware Covisint Wins "Best Automotive Supplier" Award

Covisint Worldwide Contact

Industries Solutions Resources News & Events Customers Partners

login

Home > Covisint Support > Login Print this page

business now automotive

Text Size: A A A

Innovative Solutions Delivered to Customers
View Case Study

Automotive Login

User Name

Password Login

Forgot Your Password?
Logging in indicates acceptance of Terms of Use and Privacy Policy

Done Internet

User ID entered here

Password entered here and Login.



Covisint Enterprise Portal :: Covisint - Microsoft Internet Explorer

File Edit View Favorites Tools Help

Address <https://portal.covisint.com/portal/private/>

Google

Covisint Products business now™ Trading Partners My Workspace Help

covisint
a subsidiary of Compuware Corporation

Welcome Rosane de Abreu Franca Ducastel - Covisint Europe B.V.

My Favorites
» Edit my favorites...

Covisint Applications

- Covisint Connect
- Covisint Time Tracker
- GRID - Covisint Access
- Library Services
- Sourcing Directory
- Supplier Bulletin
- Supplier Connection
- Supplier Connection (PSA)**
- Partner Portals...
- Delphi Supplier Portal

Administration

- Administration Tools
- Change Password
- Edit My Profile

Search

Go

Advanced Search

Supplier Bulletins

Receive email alerts when bulletins are published. Get started »

Status	Subject	From	Publish Date
NEW	Minority Business Enterprises (MBEs) All Indirect and Direct Suppliers	Delphi Corporation - World Headquarters	04/20/2007
NEW	Supplier Scorecard Formula Updated for 2007 All Delphi Direct Suppliers	Delphi Corporation - World Headquarters	04/19/2007
NEW	NBH / CS2 Notification to Registrars Suppliers to Delphi Thermal Systems	Delphi Corporation - World Headquarters	04/19/2007
NEW	Delphi Problem Solver Quality Application - Launch Notice Direct Material Suppliers	Delphi Corporation - World Headquarters	04/09/2007
	Packing Slip/Label Requirements - Reminder to Suppliers of North American Powertrain / E&C Locations Suppliers of NA Powertrain / E&C Locations	Delphi Corporation - World Headquarters	03/20/2007

Go to Bulletins

Auto Beat Daily

- Auto Beat Daily - April 23, 2007
- Auto Beat Daily - April 20, 2007
- AutoBeat Daily - April 19, 2007
- AutoBeat Daily - April 18, 2007

more

Auto Tech Daily

- AutoTech Daily - April 23, 2007
- AutoTech Daily - April 20, 2007
- AutoTech Daily - April 19, 2007
- AutoTech Daily - April 18, 2007

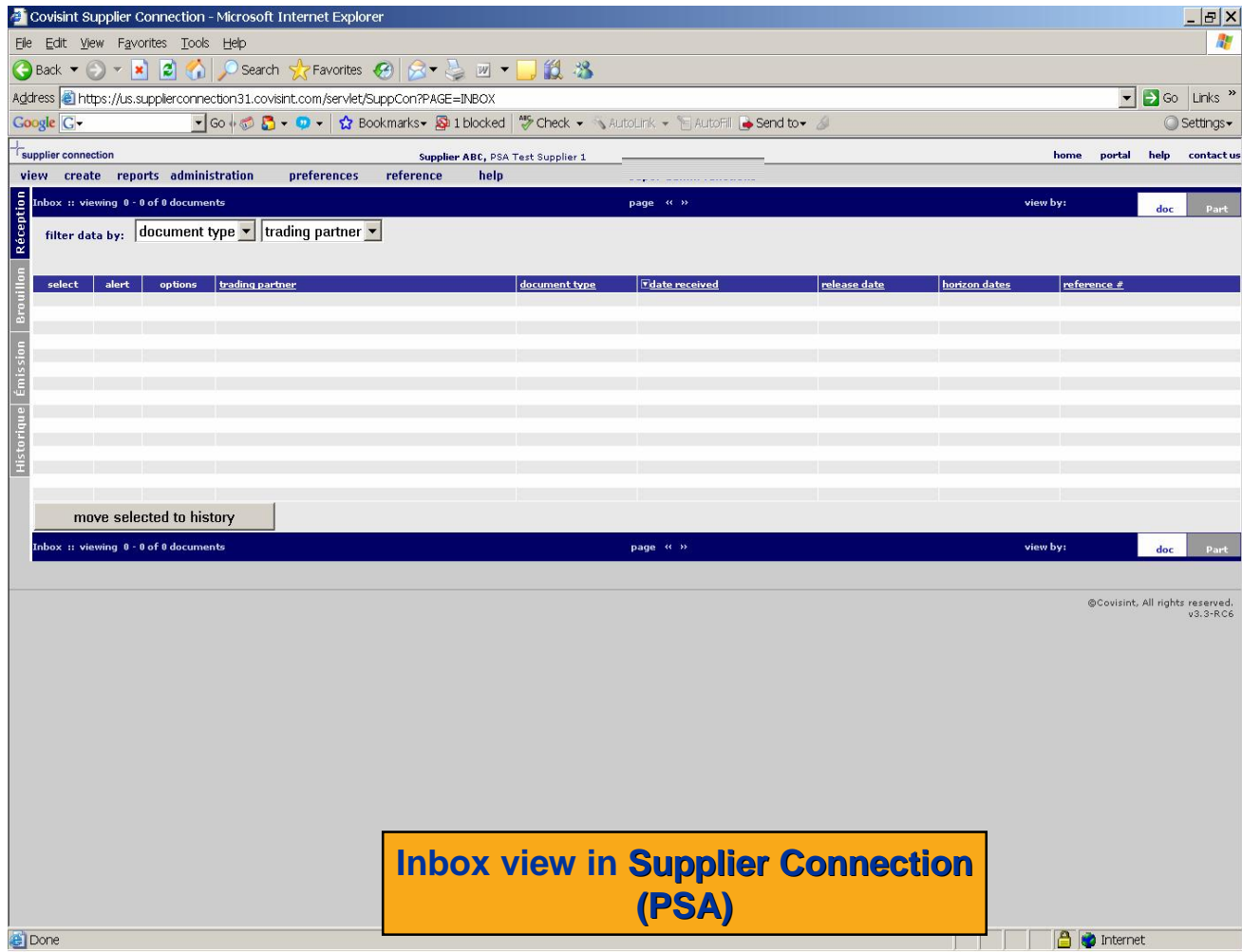
more

Auto Beat Asia (We)

- AutoBeat Asi

more

Link to Supplier Connection (PSA)



Step 2 **User manuals on Covisint website**

Online Help and Training Material

- Please log into Covisint Portal to access the training material, select the **Training** tab at the top of the screen, then Supplier Connection (PSA).
- When inside the Supplier Connection application, please select the **Help** tab. Comprehensive **User and Administrator Guides** are also available for downloading. In order to understand the different roles it is very important that you read the above mentioned guides.
- Please see example in the next slides.



Covisint Communicate Portal :: Training - Microsoft Internet Explorer

File Edit View Favorites Tools Help

Back Forward Stop Search Favorites Media Print Copy Paste

Address https://portal.covisint.com/wps/private/_jten/!ut/p/.cmd/cs/.ce/7_0_A/.s/7_0_AO/.s/7_0_A/7_0_AO Go Links

Help Edit My Profile Language Search Log out

Covisint : Products : Trading Partners : My Workspace

covisint
a subsidiary of Compuware Corporation

Covisint Bulletins **Training** Industry News

Welcome Rosane de Abreu Franca - Covisint Europe B.V.

My Favorites
» Edit my favorites...

Covisint Applications

- GRID - Covisint Access
- Library Services
- Sourcing Directory
- Supplier Bulletin
- Supplier Connection
- Supplier Connection (PSA)
- Partner Portals...
- Delphi Supplier Portal

Administration

- Administration Tools
- Change Password
- Edit My Profile

Search
 Go
Advanced Search

Application Training

Training

⚠ You must have version 5.0 of the Adobe Reader to avoid display errors when downloading and/or printing training materials. Previous versions of this free reader may not allow files to display properly.
[Download the FREE Adobe Reader 5.0.](#)

Covisint Connect
Inventory management, which enables inventory visibility and information flow between trading partners.

Covisint Connect
This application is a data messaging service that provides a single connection for a company's computers to exchange data with the computers of its partners.

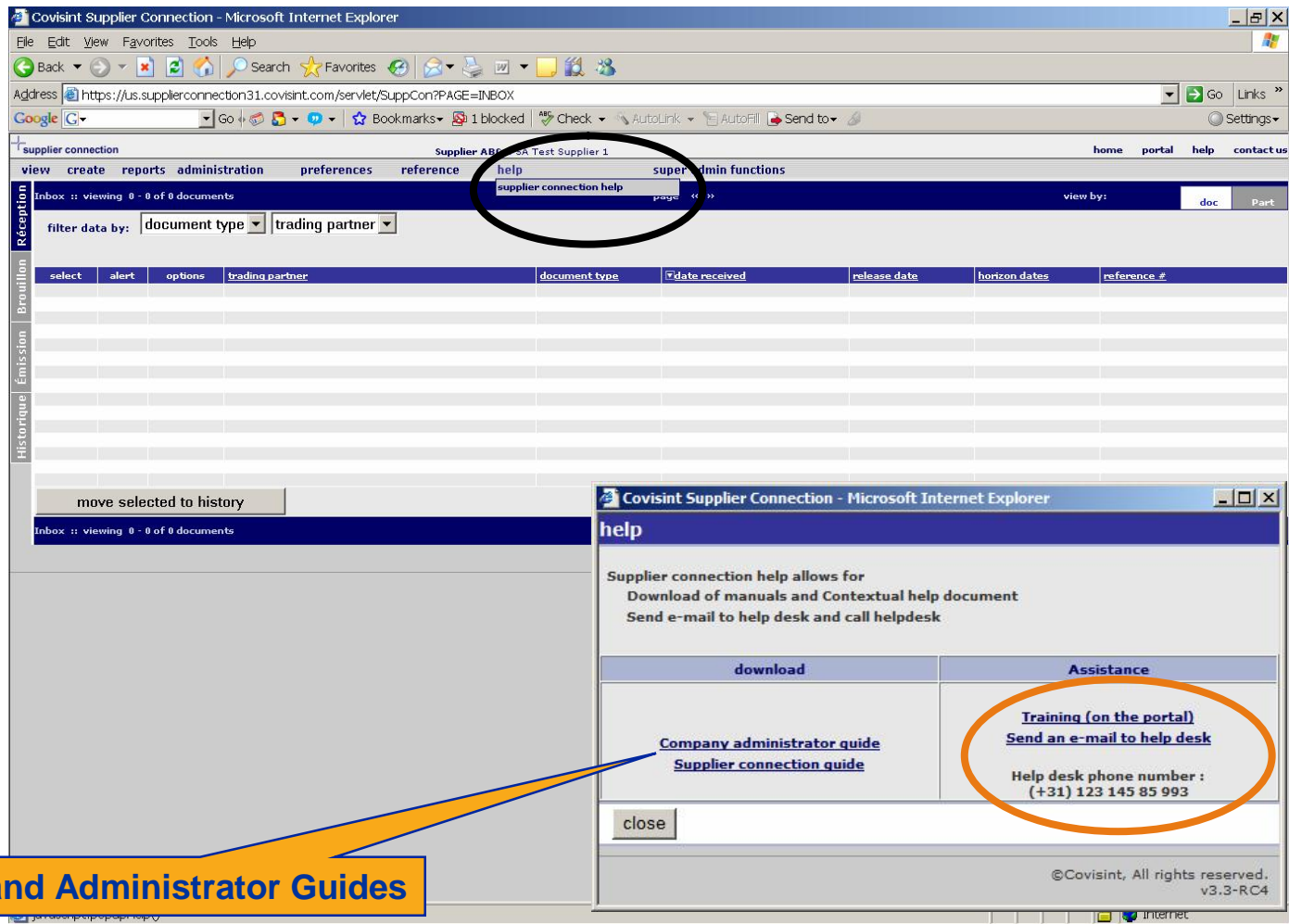
Supplier Connection (Learn)
This application connects supply-chain partners via the Internet, improving communication between parties by eliminating non-EDI communication and processes between customers and suppliers (i.e. phone, fax, e-mail, etc.).

Supplier Connection (PSA)
This application connects supply-chain partners via the Internet, improving communication between parties by eliminating non-EDI communication and processes between customers and suppliers (i.e. phone, fax, e-mail, etc.).

Covisint Communicate
Answers corporations' e-business needs that include how to best communicate between corporations and their trading partners.

Connection and Administration
Covisint Connection and Administration (CCA) provides all Covisint users with User IDs and access management. CCA uses a delegated administration model, giving all registered users the ability to manage their own accounts and to request access to additional services, while allowing Security Administrators to approve or reject these requests and otherwise manage the users in their organizations. CCA provides the software necessary to support Covisint's Multi-Domain Sign-On technology, synchronizing access permissions as needed for applications hosted in partner domains. CCA also includes reporting and auditing tools for our Portal partners and all suppliers registered on Covisint.

Internet



User and Administrator Guides

Step 3 **Set up User Preferences**

- In this section you will be able to set and edit your preferred time zone and language, define your In-Box view settings (document view or part number view) and add your e-mail address in order to be informed about incoming forecasts and orders.
- **Note:** Suppliers using Supplier Connection for invoices only, will receive nothing in their inbox apart from any special bulletin messages issued by Covisint or PSA
- Please follow the instructions on the next slide.



Covisint Supplier Connection - Microsoft Internet Explorer

File Edit View Favorites Tools Help

Address: https://us.supplierconnection31.covisint.com/servlet/SuppCon?PAGE=INBOX

supplier connection Supplier ABC, PSA Test Supplier 4 home portal help contact us

view create reports administration preferences reference help

edit preferences

filter data by: document type trading partner

select alert options trading partner

move selected to history

Inbox :: viewing 0 of 0 documents

supplier connection psaseller2 psaseller2, FOURNISSEUR SA home portal help contact us

view create reports administration preferences reference help

edit user preferences

user information:

user id: PSASSELLER2

first name: psaseller2

last name: psaseller2

job title:

company name: FOURNISSEUR SA

preferred language: English (GB)

time zone: (GMT+01:00) Amsterdam, Berlin, Bern, Rome, Stockholm, Vienna

Default View*: Document

e-mail address: dkoempel@covisint.com (where to send the "new message" information)

save changes OR cancel and go to inbox

DEBUG:

jsp page: //preferences.jsp

server: Resin/2.1.2

Servlet API version: 2.3

Browser encodings accepted: null

Request Server Time: 318 milliseconds

RST / Param : 318 milliseconds

Parameters : 1

PAGE PREFERENCES

@Covisint. All rights reserved.
v3.2.5.4

Select edit preferences from the preferences menu

Enter preferred language, time zone, inbox default view and e-mail address and click on save



Covisint Supplier Connection - Microsoft Internet Explorer

Address: https://us.supplierconnection31.covisint.com/servlet/SuppCon?PAGE=INBOX

supplier connection Rosane de Abreu Franca, PSA TEST Supplier

view create reports administration preferences help super admin functions

Inbox :: viewing 1 - 6 of 6 documents page << 1 >> view by: doc Part

filter data by: document type trading partner

	select	alert	options	trading partner	document type	date received	release date	horizon dates	reference #
inbox	<input type="checkbox"/>			PSA Pole Tertiaire - Test	DELJIT	11/25/05 4:00 PM	11/15/05	12/2/05	TEST000000000000556
draft	<input type="checkbox"/>			PSA Pole Tertiaire - Test	DELJIT	11/25/05 3:59 PM	11/15/05	12/2/05 -> 12/3/05	TST100000000000555
sent	<input type="checkbox"/>			PSA Pole Tertiaire - Test	DELJIT	11/15/05 8:06 AM	11/15/05	12/2/05 -> 12/3/05	TST100000000000500
history	<input type="checkbox"/>			PSA Pole Tertiaire - Test	DELJIT	11/15/05 8:06 AM	11/15/05	12/2/05	TEST000000000000501
	<input type="checkbox"/>			PSA Pole Tertiaire - Test	DELJIT	11/15/05 8:06 AM	11/15/05	11/2/05 -> 11/9/05	TEST000000000000431

Samples of inbox view set to *document* and *part*.

Covisint Supplier Connection - Microsoft Internet Explorer

Address: https://us.supplierconnection31.covisint.com/servlet/SuppCon?PAGE=INBOX&VIEW=PART

supplier connection psaseller2 psaseller2, PSA TEST Supplier

view create reports administration preferences reference help super admin fu

Inbox :: viewing 1 - 15 of 22 parts page << 1 2 >> view by: doc Part

set filter... reset filter

buyer part number: go

requirement filter: DELJIT

requirement filter: from 24/04/03

0 lines selected ☐ display only selected clear selected

	select	options	cust part# (supplier part number)	quantity	horizon dates	demand type	ship from	ship to	dock	release date
inbox	<input type="checkbox"/>		1111111111	500	02/12/05 (P)	firm	Test Site ASNIERES	PSA Test (Série/PR)	POLEDECBB	15/11/05 08:02
draft	<input type="checkbox"/>		1111111111	1120	02/12/05 (P)	firm	Test Site ASNIERES	PSA Test (Série/PR)	POLEDECAA	15/11/05 08:02
sent	<input type="checkbox"/>		1111111111	1120	02/12/05 (P)	firm	Test Site ASNIERES	PSA Test (Série/PR)	POLEDECAA	15/11/05 08:02
history	<input type="checkbox"/>		2222222222	280	02/12/05 (P)	firm	Test Site ASNIERES	PSA Test (Série/PR)	POLEDECAA	15/11/05

Step 4 Set up Supplier Company details

In this step you will add the required information about your own company.

Please fill in all the mandatory fields under the legal information:



- Vat number:
- Legal name:
- Legal Status: Ltd., SA, plc etc....
- Capital: Euro xxxxxxxxxx..
- Registration number: Chamber of commerce number
- Please follow the instructions on the next slide.



Covisint Supplier Connection - Microsoft Internet Explorer

File Edit View Favorites Tools Help

Back Forward Stop Home Search Favorites Go Links

Address <https://us.supplierconnection31.covisint.com/servlet/SuppCon?PAGE=INBOX>

Google Go Bookmarks 1 blocked Check AutoLink

supplier connection Supplier ABC, PSA Test Supplier 1

view create reports administration preferences reference help

Inbox :: viewing 0 - 0 of 0

filter data by:

- administer company
- administer relationships
- upload profiles

select alert options trading partner document type date received release date horizon dates reference #

move selected to history

Inbox :: viewing 0 - 0 of 0 documents

page « » view by: doc Part

@Covisint, All rights reserved.
v3.3-RC6

/servlet/SuppCon?PAGE=COMPANY_ADMIN

Internet

Select administer company



Microsoft Internet Explorer

File Edit View Favorites Tools Help

Address https://us.supplierconnection31.covisint.com/ser/viet/SuppCon?PAGE=COMPANY_ADMIN&companyId=2971

Google 1 blocked Check AutoLink AutoFill Send to Settings

supplier connection Rosane de Abreu Franca, Covisint home portal help contact us

view create reports administration preferences help super admin functions

company information for...

general information

company name: PSA Test Supplier 1

company administrator(s): Supplier ABC

ship from options: add a location

options loc page date created

buyers options Buyer: date created status

PSA Pole Tertiaire - Test 2/19/03 6:17 PM completed

users options: add users

options user id first name last name status

SUPPLIERABC Supplier ABC active

SUPPLIERDEF Supplier DEF active

showing 1 thru 4 of 4 locations page : 1 showing 1 thru 3 of 3 buyers page : 1 showing 1 thru 2 of 2 users page : 1

©Covisint, All rights reserved. v3.3-RC6

Done Internet



Covisint Supplier Connection - Microsoft Internet Explorer fourni par PSA Peugeot - Citroën

Fichier Edition Affichage Favoris Outils ?

Adresse https://us.supplierconnection31.covisint.com/servlet/SuppCon?PAGE=COMPANY_ADMIN

Précédente Recherche Favoris Historique

supplier connection Pilotage Vendeur, PSA TEST Supplier home portal help contact us

view create reports administration preferences reference help

company information for...

general information

edit company information for...

*required fields

general information	
company name *	PSA TEST Supplier
street address 1 *	PO BOX 3
street address 2	Trent Valley Road
city, state, and zip *	Lichfield WS13 6HF
country	UNITED KINGDOM
telephone	
fax	
contact name	D.JONES
contact phone number	01543 403121
contact fax number	
contact email address	

showing legal address

Terminé

Démarrer

10:46

Complete all *required fields!

Continue set up in the next slide.



https://us.supplierconnection31.covisint.com - Covisint Supplier Connection - Microso...

contact email address			
legal address			
street address *	SAL-street		
street address 1			
zip code *, city *, state	16190	SAL-city	SAL-state
Country *	FRANCE		
telephone			
location fax			
legal information			
VAT registration *	FR123456789		
legal supplier name *	PSA Test supplier		
legal status *	S.A		
capital *	1 000 000 000 euros		
registration number *	55789132 (chamber of commerce no.)		
legal information			
application parameters			
current asn document number:	90	reset to:	
container/handling unit serial number:	208	reset to:	
generate barcode labels	<input checked="" type="checkbox"/>		
save changes clear close			

©Covisint, All rights reserved.

Done Internet

Complete all *required fields!
Please select the generate bar
code label box. Then click on
save changes.

Step 5 Set up Trading Partner Relationship

- In this section you will be able to set up the trading partner relationships with the PSA companies that you trade with. The first relationship which should be established is with PSA Pole Tertiaire-Test. Only after validation you will be able to set up the trading partner relationship with the other PSA companies.
- To establish the trading partner relationship, please contact Mrs Siham Cherfa (siham.cherfa@mpsa.com) and request the following:
 1. A test relationship set up.
 2. Please confirm your Duns number. As you will need it to create your EDI codes (NAD+SE and NAD+CZ). These codes will have to be entered in the application in order to enable sending and or receiving of messages. Below is a sample of a standard format.

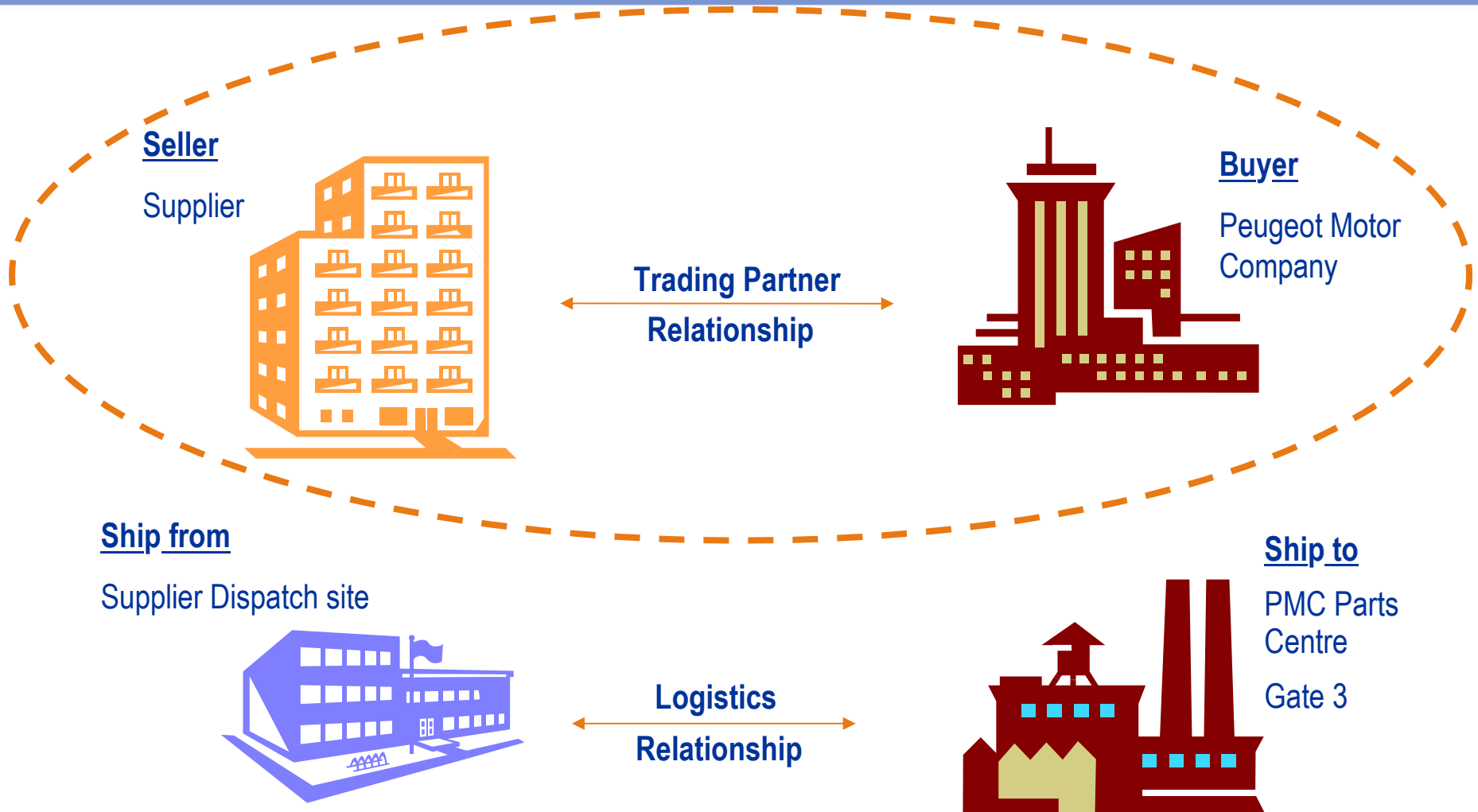
NAD+SE or EDI code = 0060 + Duns Qualifier 5 Example: 0060275522963 Qualifier 5

NAD+CZ or Ship from EDI code = 0060 + Duns + 00001 Qualifier 5

If your company has more than one ship from location, then the NAD+CZ for the second location should be = 0060 + Duns + 00002 Qualifier 5.

Example: 006027552296300001 Qualifier 5

 006027552296300002 Qualifier 5



Step 5 Set up Trading Partner Relationship

Below is a list of PSA companies, please ensure that you choose the correct company (or companies) with which your company trades.

- Peugeot Citroen Automobiles SA
- Peugeot Citroen Automobiles UK Limited
- Peugeot Citroen Automoviles Espana S.A.
- PCA SLOVAKIA S.R.O
- PSA Pole Tertiaire - Test
- Peugeot Motor Company PLC
- Societe Europeenne De Vehicules Legers du Nord
- Peugeot Citroen Automoveis
- Ste Francaise de Mecanique

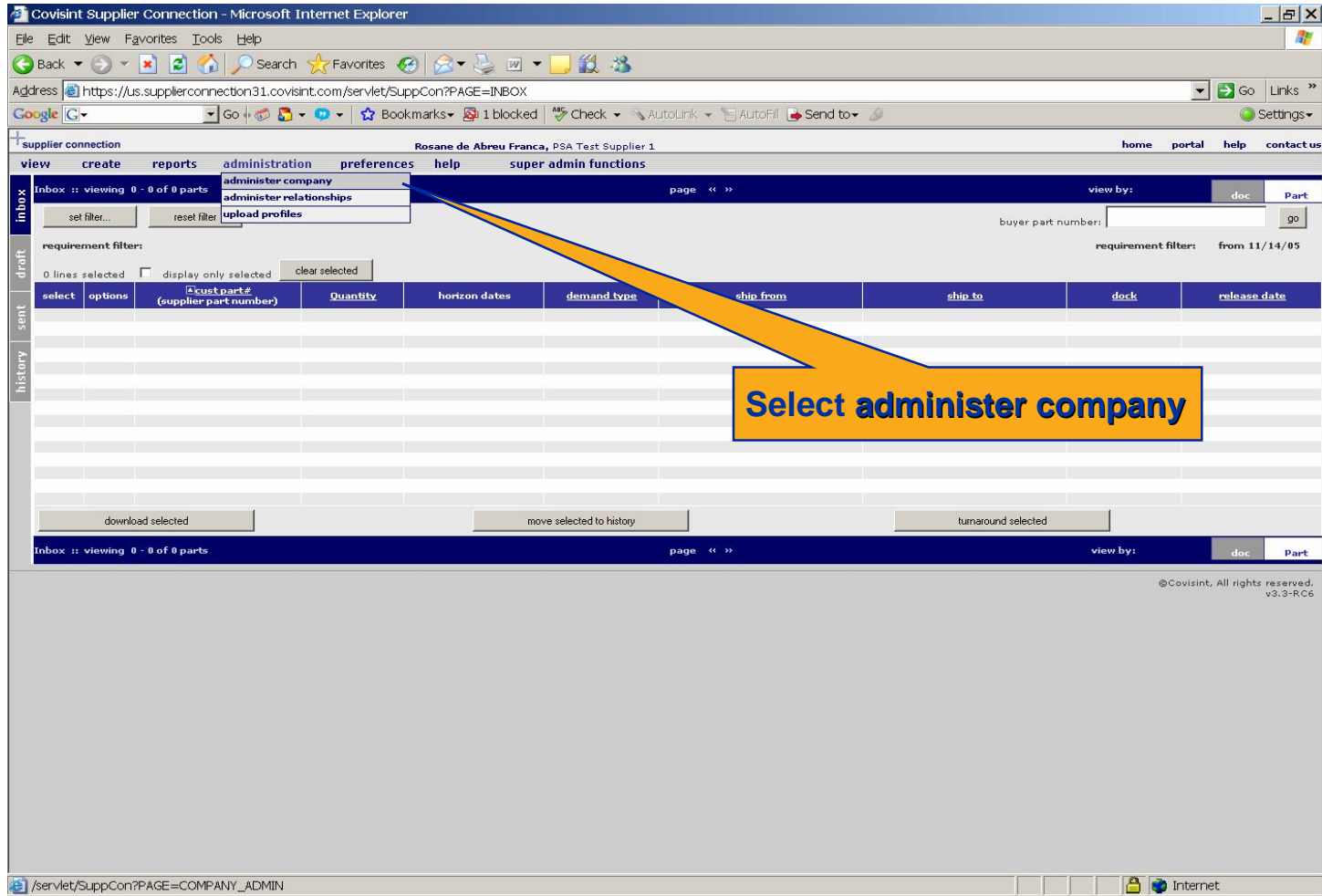
(For every new relationship established, please repeat this set up process).

- NOTE: Invoice only suppliers, please refer to the list of PHF-PSA companies in the next slide.

Step 5 **Set up Trading Partner Relationship**

Please find below a list of all PHF-PSA Companies

- PHF-Automobiles Citroen Espana
- PHF-PCA Slovakia S.R.O
- PHF-Peugeot Citroen Automobiles SA
- PHF-Peugeot Citroen Automobiles UK Ltd
- PHF-Peugeot Citroen Automoviles Espana
- PHF-Peugeot Espana
- PHF-Peugeot Motor Company PLC
- PHF-PSA Pole Tertiaire-Test
- PHF-Ste Europeenne Vehicules Leger du Nord
- PHF-Ste Francaise de Mecanique
- PHF-PSA Pole Tertiaire-Test
- Please follow the instructions on the next slide.



For every new relationship established, please repeat this set up process.



Covisint Supplier Connection - Microsoft Internet Explorer

Address: https://us.supplierconnection31.covisint.com/servlet/SuppCon?PAGE=COMPANY_ADMIN&companyId=2971

supplier connection Rosane de Abreu Franca, Covisint

view create reports administration preferences help super admin functions

company information for...

general information

company name: PSA Test Supplier 1
company administrator(s): Supplier ABC

ship from options: add a location

options	location name	date created
—		

showing 1 thru 4 of 4 locations page: 1

buyers options: add buyers

options	buyer	date created	status
	PSA Pole Tertiaire - Test	2/19/03 6:17 PM	completed
—			

showing 1 thru 3 of 3 buyers page: 1

users options: add users

options	user id	first name	last name	status
	SUPPLIERABC	Supplier	ABC	active
	SUPPLIERDEF	Supplier	DEF	active

showing 1 thru 2 of 2 users page: 1

©Covisint. All rights reserved.
v3.3-RC6

Done Internet

Select Edit icon next to the trading partner that you want to configure

Once PSA establishes the test relationship, then it will appear as above. Please follow the steps

For every new relationship established, please repeat this set up process.



https://us.supplierconnection31.covisint.com - Covisint Supplier Connection - Microsoft Intern... help ▲

*** required fields**

general information	
company name	PSA Pole Tertiaire - Test
street address	2-10, Boulevard de l'Europe
street address 1	
zip code, city, state	78093 Poissy Yvelines Cedex 9
country	FRANCE
telephone	
location fax	
contact name	
contact phone number	
contact fax number	
contact email address	alice.halter@mpsa.com

general information	
supplier vendor code: *	12345A
discount legal information *	NA
discount legal information 1	
discount legal information 2	
discount legal information 3	

EDI Codes	
supplier EDI code *	0060275522963 (NAD+SE)
EDI qualifier *	5
date updated	14/01/06 12:05

save changes clear close

Done Internet

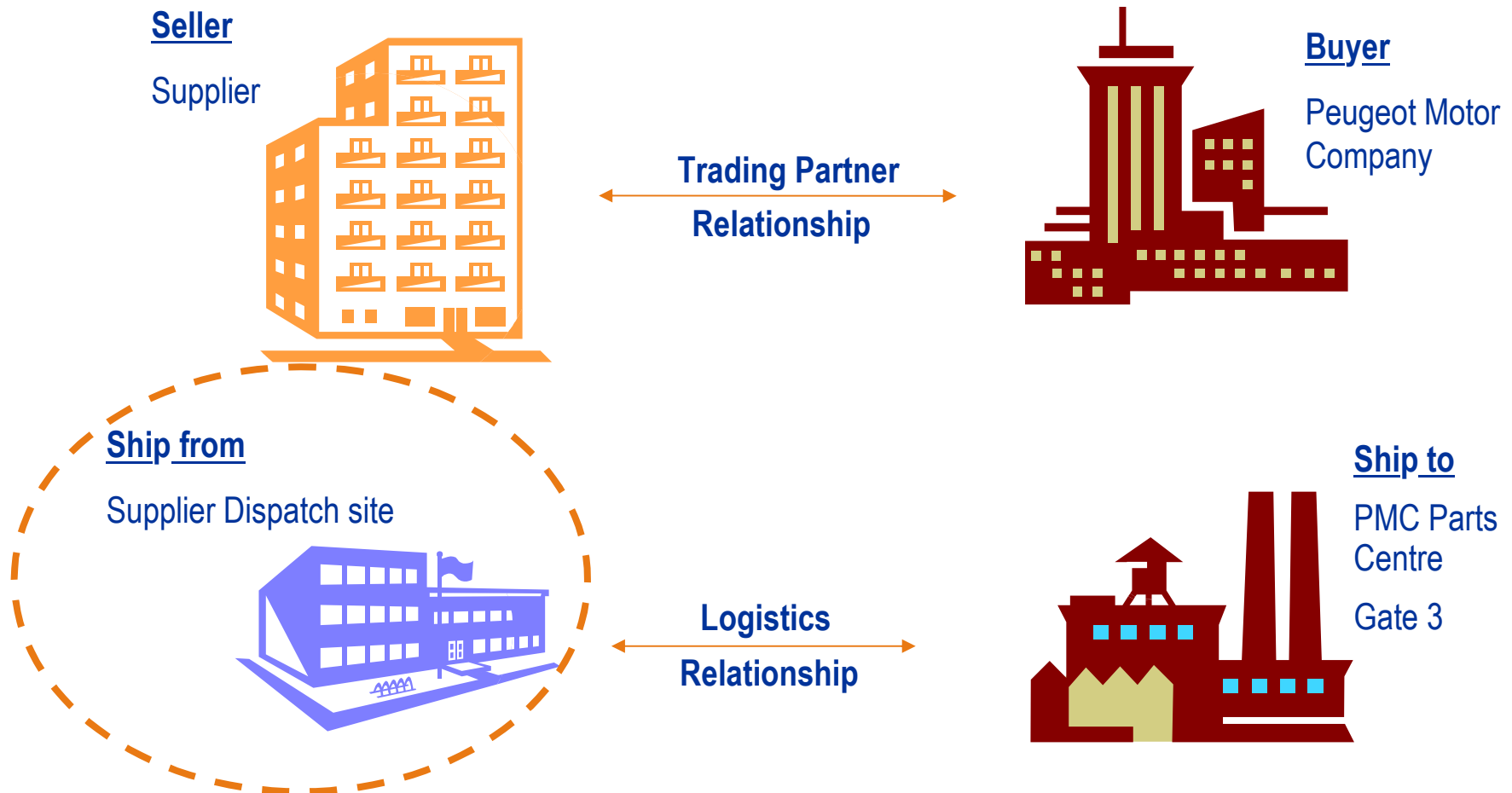
Enter your PSA COFOR (6 character supplier code)

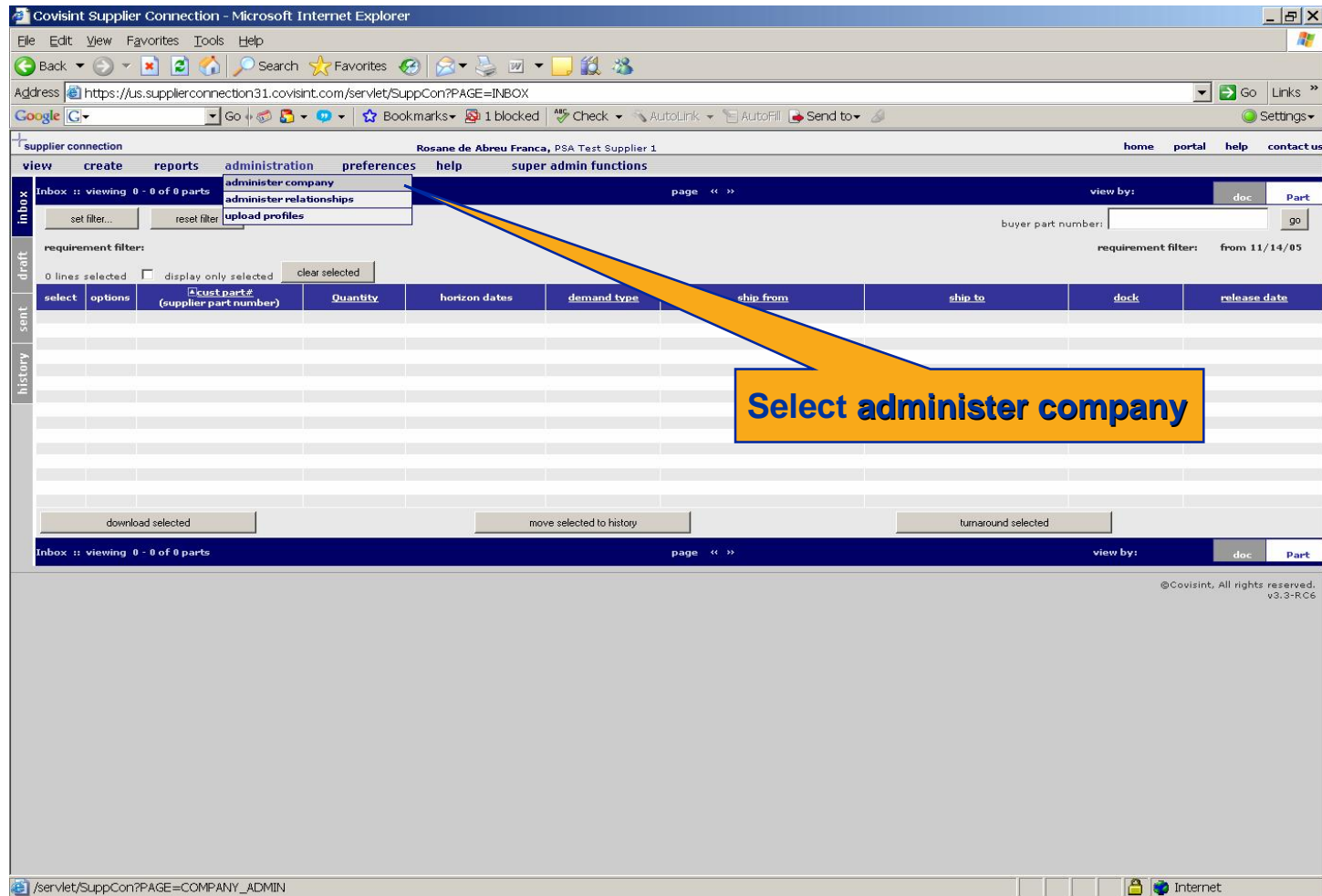
Enter Payment Discount Terms
(if none enter Not Applicable)

Enter your EDI CODE
(NAD+SE = 0060+ DUNS).
Qualifier 5. Then click on save
changes

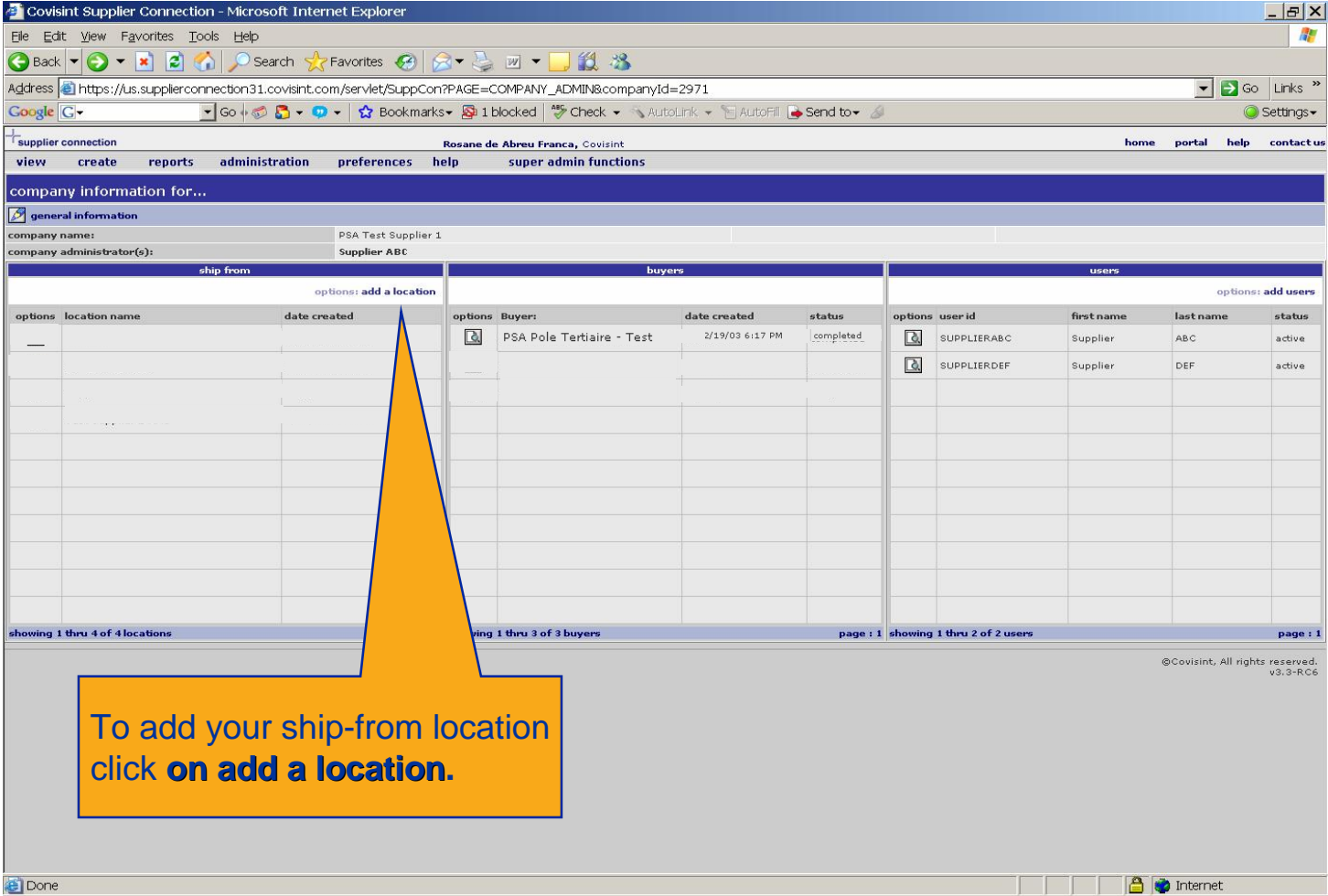
Step 6 **Set up Supplier Ship From Location**

- Supplier Ship From Location is part of the logistics relationship between your organization and the PSA receiving site and dock where the goods are to be delivered. To initiate this relationship, please follow the steps in the next slides. Further details are included in the Validation Manual (Set up logistics relationship). Should you require further information, please select Help in Supplier Connection.
- Please follow the instructions on the next slide.





For every new relationship established, please repeat this set up process.



https://us.supplierconnection31.covisint.com - Covisint Supplier Conn...
edit location information for...

*** required fields**

general information

company name	PSA Test Supplier 1		
location name *	S2name		
timezone *	(GMT+01:00) Paris, Prague, Sarajevo, Sofija, Vilnius, Warsaw, Zagreb		
street address *	S2Street		
street address 1			
zip code *, city *, state	920001	S2Ville	S2State
country	FRANCE		
telephone			
location fax			
email			
contact name			
contact phone number			
contact fax number			
contact email address			
date created	27/02/06 14:58		

EDI code

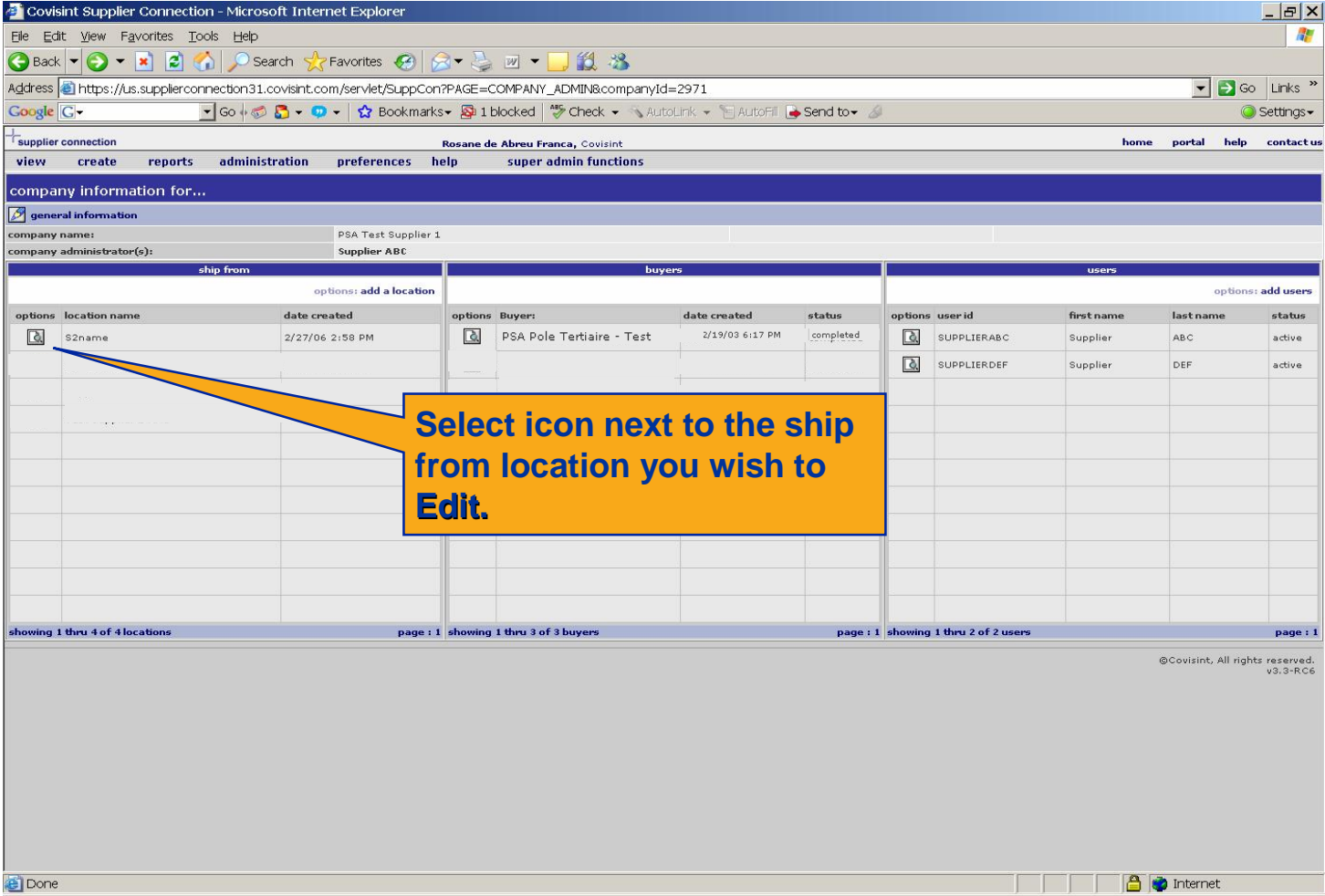
for trading partner...	EDI code *	EDI qualifier *
PSA Pole Tertiaire - Test	006027552296300001	5

Done Internet

Complete all *required fields!

Enter your EDI Ship from code (NAD+CZ = 0060 + DUNS + 00001)

EDI Qualifier 5



For every new relationship established, please repeat this set up process.

https://us.supplierconnection31.covisint.com - Covisint Supplier Conn...
edit location information for...

*** required fields**

general information

company name	PSA Test Supplier 1		
location name *	S2name		
timezone *	(GMT+01:00) Paris, Prague, Sarajevo, Sofija, Vilnius, Warsaw, Zagreb		
street address *	S2Street		
street address 1			
zip code *, city *, state	920001	S2Ville	S2State
country	FRANCE		
telephone			
location fax			
email			
contact name			
contact phone number			
contact fax number			
contact email address			
date created	27/02/06 14:58		

EDI code

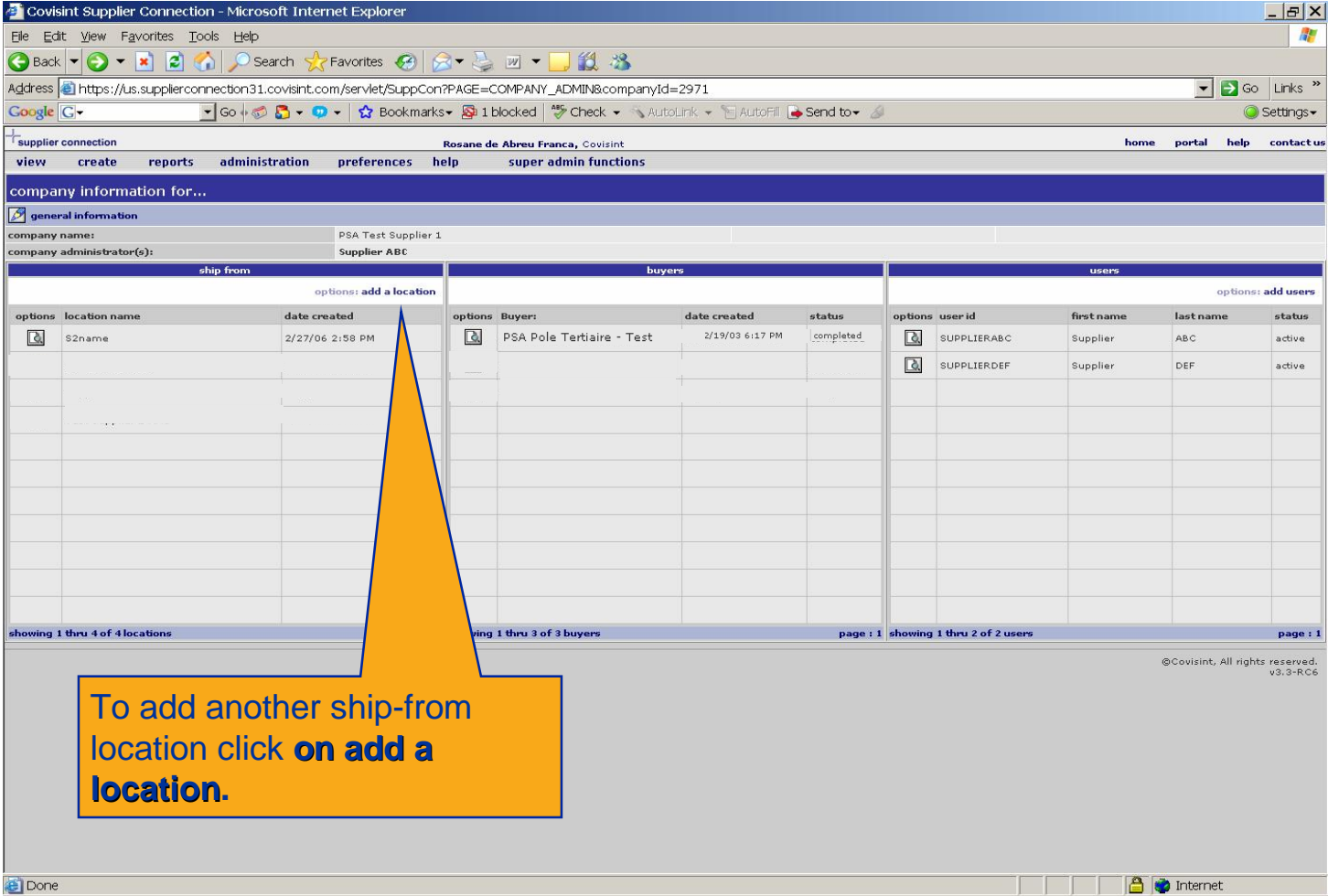
for trading partner...	EDI code *	EDI qualifier *
PSA Pole Tertiaire - Test	006027552296300001	5

Done Internet

Complete all *required fields!

Enter your EDI Ship from code (NAD+CZ = 0060 + DUNS + 00001)

EDI Qualifier 5



https://us.supplierconnection31.covisint.com - Covisint Supplier Conn...

general information

company name	PSA Test Supplier 1		
location name *	<input type="text"/>		
timezone *	select		
street address *	<input type="text"/>		
street address 1	<input type="text"/>		
zip code *, city *, state	<input type="text"/>	<input type="text"/>	<input type="text"/>
country	select		
telephone	<input type="text"/>		
location fax	<input type="text"/>		
email	<input type="text"/>		
contact name	<input type="text"/>		
contact phone number	<input type="text"/>		
contact fax number	<input type="text"/>		
contact email address	<input type="text"/>		
date created	27/02/06 14:58		

EDI code

for trading partner...	EDI code *	EDI qualifier *
PSA Pole Tertiaire - Test	006027552296300002	5
PCA Slovakia S.R.O.	006027552296300002	5
PSA Pole Tertiaire - Test		

Done Internet

Enter the *required information.

The EDI ship from code for the second location will be (NAD+CZ = 0060 + DUNS + 00002). This code has to be repeated for every PSA company this dispatch site trades with.

Enter EDI Qualifier
5

Step 7 Technical Requirements

- Microsoft Internet Explorer IE 5.5 SP2

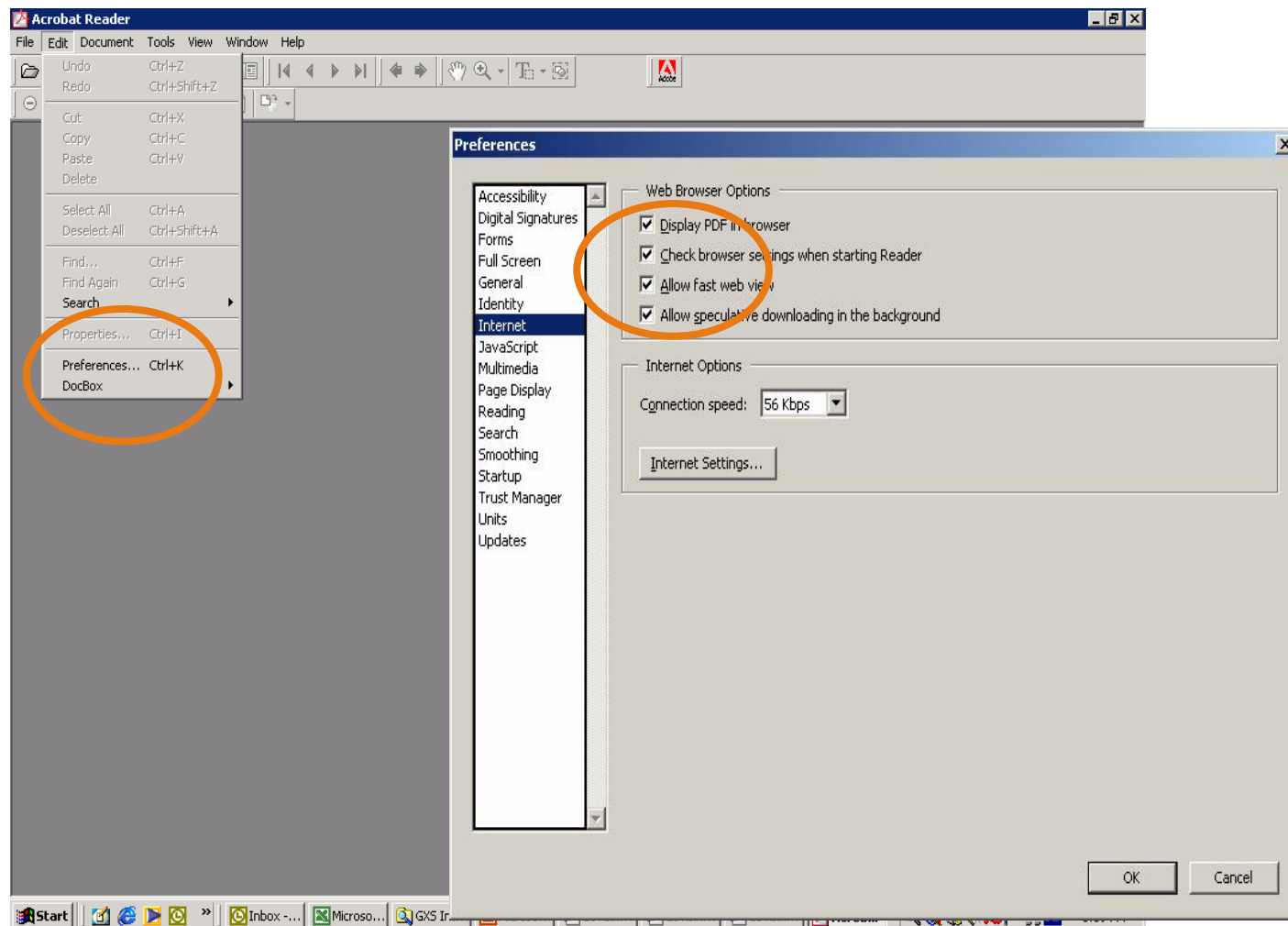
NOTE: Browser versions running under Macintosh are not supported.

- Internet Connection at 56K (higher recommended)
- Adobe Acrobat Reader 7.0 (for viewing of printable reports).

This is a free download and can be obtained from:

<http://www.adobe.com/products/acrobat/readstep.html>

- Please see next page for settings
- 300 MHz processor (greater recommended)
- 64 MB RAM (higher recommended)



Covisint Support Services Contact Information

Should you require any assistance, please send an e-mail or phone the Covisint Support Service desk (E-mail Address is covisinthelpdeskeurope@eds.com)

Country	Toll-Free Number	Direct Dial Number
US	866.273.5038	001.859.737.6141
Canada	866.273.5038	001.859.737.6141
Australia	1.800.787.355	001.859.737.6141
Japan	0066.33.821497	001.859.737.6141
Argentina	0800.666.0367	001.859.737.6141
Brazil	0.800.891.6002	001.859.737.6167
Mexico	001800.903.2588	001.859.737.6166
Venezuela	0800.1.00.5987	001.859.737.6141
Austria	0800/ 291488	+32 1578 2057
Belgium	0800/ 999 85	+32 1578 2630
France	0800/ 91 68 77	+32 1578 2633
Germany	0800/ 1860092	+32 1578 2632
Italy	800/ 780424	+32 1578 2634
Netherlands	08009494612	+32 1578 2496
Portugal	800/ 832 058	+32 1578 2630
Spain	900/ 973 274	+32 1578 2631
Sweden	020-791-826	+32 1578 2630
Poland	00800 1112095	+32 1578 2630
Turkey	--	+32 1578 2643
UK	08000/ 284 770	+32 1578 2630
China		86 21 6247 9222
Korea		86 21 6247 9222
Malaysia	800 80 7658	001.859.737.6141
Thailand	001.800.1.3.200.4876	001.859.737.6141
Taiwan	00801 14 8417	001.859.737.6141
South Africa	0800996881	+32 1578 2630

PSA Contact Information

- **For any questions related to the Project Web-EDI please contact ...**

Mrs Siham CHERFA +33 (0)1 61453209 siham.cherfa@mpsa.com

- **For any business process related questions please contact ...**

Logistics

Mrs Siham CHERFA +33 (0)1 61453209 siham.cherfa@mpsa.com

Invoicing France

Pascal Torchin +33 (0)1 61450560 pascal.torchin@mpsa.com

Invoicing UK

Peggy Jouanne +33 (0)1 61450562 peggy.jouanne@mpsa.com

For any reference data related questions please contact ...

Your PSA material control contact(s) at the plant(s) concerned

PSA Help Desk +33 (0)3 84469000

The background of the slide features a stylized world map in light blue, centered on the Atlantic Ocean. Overlaid on the map is a bright, radiant sunburst or starburst effect, with rays of light emanating from a central point, creating a sense of energy and global reach. The overall color palette is light blue and white, giving it a clean, professional appearance.

covisint[®]

a subsidiary of Compuware Corporation